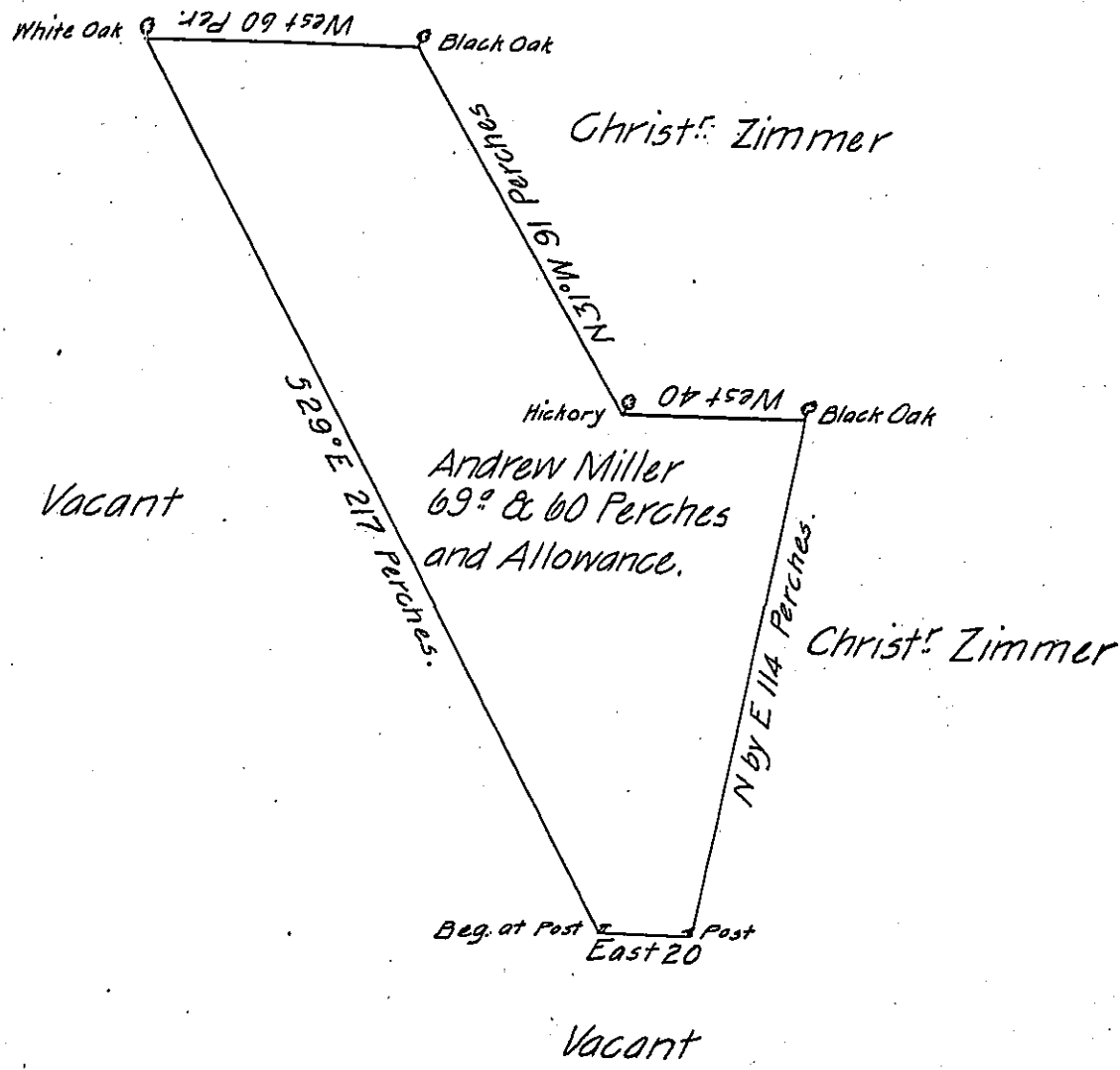


John Myer



A Draught of a Tract of Land situate in Lebanon in the County of Lancaster containing sixty nine Acres and sixty Perches and an Allowance proportional to six Acres $\frac{1}{2}$ Cent for Roads and Highways surveyed the 7th day of March 1749/50 by Thomas Cookson Esquire late Deputy Surveyor of Lancaster County for Andrew Miller in pursuance of a Warrant bearing date 25th day of May 1748.

Protracted from M^r Cooksons Field Book and Calculated

$\frac{1}{2}$ Geo. Stevenson one of the Exec^{rs} of Tho^s Cookson Deced.

To John Lukens Surv^r Gen^l

IN TESTIMONY that the above is a copy of the original remaining on file in the Department of Internal Affairs of Pennsylvania, made conformably to an Act of Assembly approved the 16th day of February, 1833, I have hereunto set my Hand and caused the Seal of said Department to be affixed at Harrisburg, this twenty first day of November 1905.

Isaac P. Brown
Secretary of Internal Affairs.